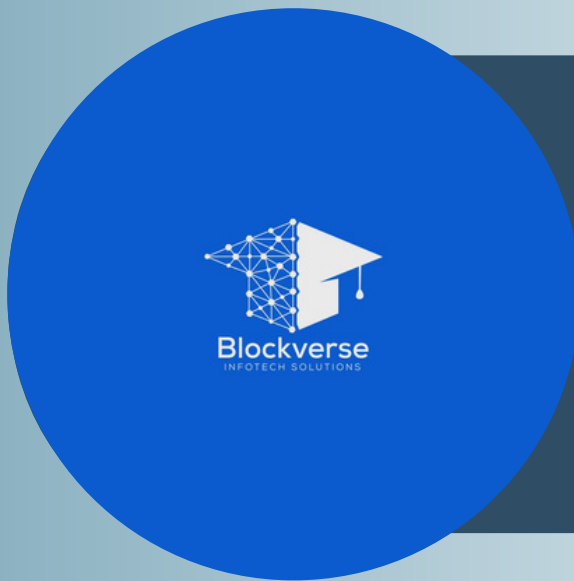




PORTFOLIO

Together we make Difference



**Blockverse
Infotech
Solutions**

+91-7877056036

Jaipur, Rajasthan, India, 302006





Table Of Content

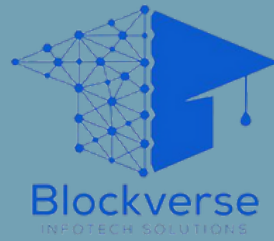
- ▶▶ **About Us**
- ▶▶ **Our Goals**
- ▶▶ **Our Services**
- ▶▶ **Methology & Approach**
- ▶▶ **Why choose us**
- ▶▶ **Portfolio**
- ▶▶ **Products we Develop**
- ▶▶ **Technologies we work on**





About Us

Blockverse Infotech Solutions isn't just another tech company; we're the architects of digital evolution. As pioneers in the realm of Embedded, Firmware , IOT, Blockchain Development, Web Development, and App Development, we don't just write code; we sculpt the future. Our commitment to innovation and excellence isn't a mere statement; it's a blueprint for transforming your vision into reality.



OUR MISSION

Our mission is to empower customers and captivate audiences through our Services & designs.

OUR VISION

Creativity should always balance well with functionality. We believe in making beautiful design that.

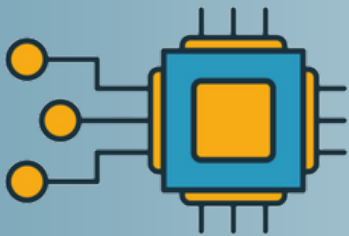


Our Services



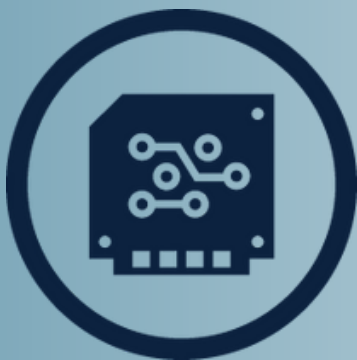
IoT Solution

- Sensor Integration & Data Analytics.
- Custom IoT Application Development
- Cloud Connectivity and Platform Integration
- IoT strategy and Consulting



Embedded Solution

- Firmware Development Driver
- Development Real-Time Operating (RTOS)
- Product Development.



PCB Designing

- PCB Design & Layout
- Prototyping & Testing





Location-Based Hardware Development

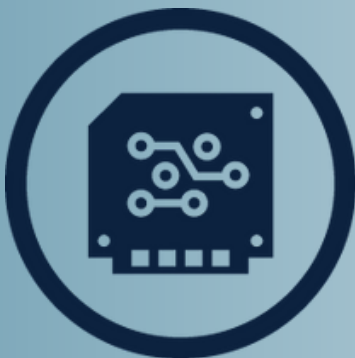


- Real-Time Data Transfer Seamless
- Integration with software Cloud Connectivity and Platform
- Integration Hardware Development

Web & Mobile Application



- Real time Data collection
- BLE, WiFi, Hotspot Integration UI/UX
- Development.
- IoT Architecture Development.



PCB Manufacturing

- Prototyping & Testing
- Bulk production.





Methology And Approach

At Blockverse Infotech Solutions, we believe that a well-defined methodology and approach are crucial for successful project execution and achieving desired outcomes. Our proven methodology ensures that we deliver high-quality solutions that meet your specific needs.

- **Requirement Gathering and Analysis**
- **Solution Design and Architecture**
- **Agile Development and Iterative Approach**
- **Rigorous Testing and Quality Assurance**
- **Deployment and Implementation**
- **Ongoing Support and Maintenance**

Throughout the project, we prioritize open communication, collaboration, and transparency. We believe in fostering a strong partnership with our clients, providing regular progress updates, and involving you in key decision-making processes.

By following this methodology and approach, we ensure that your project is delivered on time, within budget, and to your utmost satisfaction.



Why Choose Us?

We recognise that companies like your's face a range of unique needs and challenges in today's dynamic market. We have carefully analysed your company's requirements and identified key areas your specific pain points.

Rapid Technological Advancements -: Our expertised services enable us to develop cutting-edge solutions that keep you at the forefront of technological advancement.

Connectivity and Scalability -: Our comprehensive IoT solutions offer robust architectures and seamless integration with cloud platforms, enabling you to build scalable, interconnected ecosystems that support your business goals and accommodate future growth.

Efficient Device Control and Management-: With our solutions, you can optimise processes, automate workflows, and streamline operations to improve overall efficiency and productivity.



Time-to-Market Pressures -: Our experienced designers leverage the latest tools and techniques to deliver high-quality PCB layouts that accelerate the production process, reduce iterations, and minimise time-to-market, enabling you to seize opportunities quickly.

Security and Compliance -: Our solutions are built with security in mind, incorporating robust authentication mechanisms, data encryption, and compliance with industry standards. We ensure that your systems and devices are protected against cybersecurity threats and adhere to relevant regulations.

Customisation and Flexibility-: We work closely with your team to understand your specific needs, goals, and industry nuances, ensuring that our solutions are fully aligned with your vision and objectives.





Portfolio

1) GPS Enabled Smart Harness Safety device-

LORA & GPS technology is used to make the Harness belts smart and safety alert based with the GYRO and zerk sensor technology too.

2) Oxygen Plant Analyser Data Logger

IoT and M2M GSM Technology is used to give the oxygen plant status with the current Oxygen analyser value on the dashboard. It is bidirectional system.

3) IoT Enabled Smart Dustbin

IoT & Embedded technology with high frequency controller is used to make the dustbin smart by monitoring their filling status and fire detection with the sensors. And also using RFID protection technology for locking the gates and only give access to recommended persons



4) Blood Vibrator & Mixer Machine

Electronics & Embedded Technology is used for Controlling the DC & Vibrator Motors.

5) Blood Vibrator & Mixer Machine

Electronics & Embedded Technology is used for Controlling the DC & Vibrator Motors.

6) Fall Detector Device

Gyro Sensor as well GSM & RF based technology is used to detect the fall of any human being and transmit the data to the concerned with GSM and RF technology.

7) Distance and Area Calculator Device

GSM+GPRS+GPS Technology is used to calculate the area of any Geometric figure by taking the latitude and longitude from device by pressing the button and send the data to cloud and with AI & ML algorithm calculate the Area of that.





8) Aerodynamic Based Wind tunnel

Different Electronics based concepts (Fan speed controlling, Fog Generating, Angle variation module etc.) used to display the Aerodynamic Concept at one place.

9) Real time weather data logger

GSM+GPS+GPRS and different Analog sensor based technology is used to collect the real time weather data and send to the IoT enabled cloud using MQTT protocols.

10) IoT Based Customised RFID Attendance System

GSM & Wi-Fi Technology is used to make the Customised RFID Attendance system IOT enabled and get attached to the dashboard.

11) Multi-processing & Multi-tasking Mobile Application based controlled System.

and more.....





Products we develop

- 1) OBD Scanner (CAN Based) - Automotive Sector - Fleet Management .**
- 2) Data Loggers - Industry 4.0. - Automation**
- 3) Location-Based Hardwares - GSM+GPRS - Trackers for Auto, Animals.**
- 4) Consumer electronics - Home Automation, Safety, Entertainment.**
- 5) Innovative products for - Furnitures, car&Bikes, Medical Industry, Paper Industry.**





Technologies we work on

Embedded Linux

Embedded System

**5G , WiFi, BLE,
IoT, AI, ML**

**V2X (Vehicle to
everything combination)**

LoRaWAN & NB-IoT

Micro-Controllers on which we work

- 1) ARM controller(STM)**
- 2) Texas**
- 3) ESP-32**
- 4) Nuvotron**

and we are open to work on NEW controller.....



Thank you for your interest in **Blockverse Infotech Solutions**. We are eager to discuss your requirements and explore how our services can benefit your business. Please find our contact information below:

Company Name: Blockverse infotech Solutions.

Website: www.blockverse.co.in

Email: Info@blockverse.co.in

Phone: 7877056036

Feel free to reach out to us via email or phone, and our dedicated team will be glad to assist you. We are available during regular business hours and strive to respond to all inquiries promptly.

We look forward to hearing from you and starting a fruitful collaboration.

